



 **PRODOTTI GIANNI**

**FLUID  
FOUNDATION**  
Formulations





## **FORMULATIONS & TECHNICAL MARKETING PROFILE**

### **Prov0030      SECOND SKIN MATTIFYING FOUNDATION**

A light and fluid foundation that easily blends with the complexion creating a second skin effect. It is enriched with exopolysaccharides that provides a long lasting mattifying effect.

### **Prov0031      LIQUID POWDER BLURRING FOUNDATION**

Super-light foundation with matte finish and slightly powdery effect, ideal for oily skin.

### **Prov0033      SILKY FUSION FOUNDATION DROPS**

Ultra fluid foundation with a light coverage for a natural healthy look. It has a silky feeling and a matte finish. It gives a fresh sensation on the skin.

### **EM2-1-03      ILLUMINATING SILICONE-FREE FOUNDATION**

A cold process, silicon-free, fluid W/O foundation that gives a natural glow effect thanks to high refractive index emollients, Arcopearls Sparkle and Silver Vine Extract.



Prov0030

## SECOND SKIN MATTIFYING FOUNDATION

*A light and fluid foundation that easily blends with the complexion creating a second skin effect. It is enriched with exopolysaccharides that provides a long lasting mattifying effect.*

	Trade Name	INCI Name	Function	%
A.	<b>KF-6017</b> ( <i>Shin Etsu</i> )	PEG-10 Dimethicone	Emulsifier	4,00
	<b>KSG-016F</b> ( <i>Shin Etsu</i> )	Dimethicone, Dimethicone/Vinyl Dimethicone Crosspolymer	Texturizing Agent, Thickener	5,00
	<b>Distinctive GEL ID</b> ( <i>Vantage</i> )	Isododecane, Quaternium-90 Bentonite, Propylene Carbonate	Rheology Modifier	3,00
	<b>KF-96L-2cS</b> ( <i>Shin Etsu</i> )	Dimethicone	Emollient	28,00
	<b>KF-995</b> ( <i>Shin Etsu</i> )	Cyclopentasiloxane	Emollient	10,00
	<b>KP-578</b> ( <i>Shin Etsu</i> )	Acrylates/Ethylhexyl Acrylate/Dimethicone Methacrylate Copolymer	Dispersing Agent	0,50
B.	Microcare PHC ( <i>Thor</i> )	Phenoxyethanol, Chlorphenesin, Glycerin	Preservative	0,90
	<b>FDP-C-White3</b> ( <i>Nikko</i> )	Talc, CI 77891, Hydrogen Dimethicone, Aluminum Hydroxide	Pigment	12,00
	<b>FDP-C-Da-Yellow</b> ( <i>Nikko</i> )	CI 77492, Talc, Hydrogen Dimethicone	Pigment	1,50
	<b>FDP-C-Da-Red</b> ( <i>Nikko</i> )	CI 77491, Talc, Hydrogen Dimethicone	Pigment	0,50
	<b>FDP-C-Da-Black</b> ( <i>Nikko</i> )	CI 77499, Talc, Hydrogen Dimethicone	Pigment	0,20
C.	<b>KSP-441</b> ( <i>Shin Etsu</i> )	Polysilicone-22	Texturizing Agent	4,00
D.	Deionized Water	Aqua		25,50
	<b>1,3-Butylene Glycol</b> ( <i>SPE</i> )	Butylene Glycol	Humectant	3,00
	Sodium Chloride	Sodium Chloride	Stabilizer, Thickener	0,90
	<b>EPS Seamat P1.5</b> ( <i>Codif</i> )	Aqua, Phenoxyethanol, Saccharide Isomerate	Mattifying Agent	1,00

### Chemical/physical characteristics

Appearance:

brownish fluid emulsion

pH:

Viscosity (Brookfield RVT, 20 rpm, 20°C):

Stability:

under test

### Manufacturing process

Weigh components of phase A and stir them up until the oil phase is homogeneous. Weigh pigments (phase B) and disperse them into phase A. Disperse texturizing agent (phase C) into phase A+B. When the dispersion is completed weigh components of phase D and make the emulsion adding them into phase A+B+C, firstly slowly and then speed up.

### Remarks

Shake before use



% of natural derived ingredients in the formulation (water included)

PROV0030

## SECOND SKIN MATTIFYING FOUNDATION

A **light** and **fluid** W/S foundation with a soft and creamy feeling on the skin. Thanks to **KSP-441** and **KSG-016F** it has a very easy spreadability and at the same time a good absorption of sebum. It is enriched with **EPS Seamat P1.5** that provides an **immediate and long lasting mattifying effect**.

### Key Ingredients

**KSG-016F**: silicone crosspolymer, it creates a **matte barrier**.

### Technical Plus

**KF-6017**: linear silicone emulsifier, it has good compatibility with silicones.

### Active Plus

**EPS Seamat P1.5**: aqueous solution of exopolysaccharides produced by plankton microorganisms isolated in Brittany. It has an **immediate mattifying effect** on the skin.

### Unique plus of the formula

A **fluid** and **easy to spread** foundation for a natural looking second skin. Thanks to its mattifying effect, it is **ideal for oily skin**.

### Consumer benefits

- **lightweight** feeling
- **natural** looking
- **long lasting** mattifying effect
- **oil-free** foundation

### Free of:

- parabens
- oils
- fragrance/aroma
- petrolatum
- sulfates
- microplastic powders







Prov0031

## LIQUID POWDER BLURRING FOUNDATION

*Super-light foundation with matte finish and slightly powdery effect, ideal for oily skin.*

	Trade Name	INCI Name	Function	%
A.	<b>KF-6015</b> ( <i>Shin Etsu</i> )	PEG-3 Dimethicone	Emulsifier	4,00
	<b>KF-96L-2cS</b> ( <i>Shin Etsu</i> )	Dimethicone	Emollient	36,00
	<b>KSG-19</b> ( <i>Shin Etsu</i> )	Dimethicone, Dimethicone/Vinyl Dimethicone Crosspolymer	Texturizing Agent, Thickener	7,00
	<b>KP-578</b> ( <i>Shin Etsu</i> )	Acrylates/Ethylhexyl Acrylate/Dimethicone Methacrylate Copolymer	Dispersing Agent	1,00
	Microcare PHC ( <i>Thor</i> )	Phenoxyethanol, Chlorphenesin, Glycerin	Preservative	0,70
B.	<b>FDP-C-White3</b> ( <i>Nikko</i> )	Talc, CI 77891, Hydrogen Dimethicone, Aluminum Hydroxide	Pigment	7,00
	<b>FDP-C-Yellow3</b> ( <i>Nikko</i> )	Talc, CI 77891, CI 77492, Hydrogen Dimethicone, Aluminum Hydroxide	Pigment	2,60
	<b>FDP-C-Red3</b> ( <i>Nikko</i> )	Talc, CI 77891, CI 77491, Hydrogen Dimethicone, Aluminum Hydroxide	Pigment	1,30
	<b>FDP-C-Black3</b> ( <i>Nikko</i> )	Talc, CI 77891, CI 77499, Hydrogen Dimethicone, Aluminum Hydroxide	Pigment	1,20
C.	<b>KSP-101</b> ( <i>Shin Etsu</i> )	Vinyl Dimethicone/Methicone Silsesquioxane Crosspolymer	Texturizing Agent	6,00
	<b>Prizmalite P2050SL</b> ( <i>Prizmalite</i> )	Glass Beads	Texturizing Agent	4,00
	<b>Amihope OL</b> ( <i>Ajinomoto</i> )	N-Capryloyl Lysine	Texturizing Agent	4,00
D.	Deionized Water	Aqua		22,20
	<b>1,3-Butylene Glycol</b> ( <i>SPE</i> )	Butylene Glycol	Humectant	3,00

### Chemical/physical characteristics

Appearance:	brown cream
pH:	n.a.
Viscosity (Brookfield RVT, 20 rpm, 20°C):	1.400-2.500 mPa·s
Stability:	

### Manufacturing process

Mix components of phase A. Disperse first phase B and then C into phase A. Add phase D into A+B+C and mix until the system is homogeneous.



% of natural derived ingredients in the formulation (water included)



www.cosmesi.it

# TECHNICAL MARKETING PROFILE

PROV0031

## LIQUID POWDER BLURRING FOUNDATION

Liquid foundation super-light and slightly powdery. **KSP-101**, a combo of silicone and rubber, gives the perfect texture improving **smoothness** and **skin feeling**. **Prizmalite P2050SL**, a texturizer made of glass spheres, blurs pores, fine lines, and imperfections for a **soft-focus effect**.

### Key Ingredients

**KSP-101**: a combo of silicone powder and rubber for playful texture and soft skin feeling.

### Technical Plus

**Prizmalite P2050SL**: a texturizer made of glass spheres with particles size of 40 micron. It acts as a magnifying lense, enhancing pigment effects. It gives soft-focus too, thanks to its spherical and transparent shape. The result is a higher colour yield.

**Amihope OL**: amino-acid derivative, it imparts a soft and silky feel to the skin as well as excellent emolliency, and also can relieve drying feel of inorganic powders.

### Unique plus of the formula

A full coverage foundation that combines **maximum complexion control** with a **natural matte finish**. Ideal for oily skin.

### Consumer benefits

- **super light**
- **blur effect**
- **powdery finish**

### Free of:

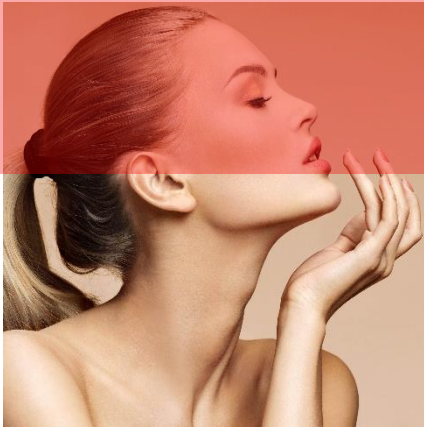
- parabens
- fragrances
- petrolatum
- sulfates
- microplastic powders



PRODOTTI GIANNI S.r.l.

Via Quintiliano, 30 - 20138 MILANO (ITALY)  
Tel. +39 02 5097 200 - Fax +39 02 5097 266

www.prodottigianni.com



Prov0033

## SILKY FUSION FOUNDATION DROPS

*Ultra fluid foundation with a light coverage for a natural healthy look. It has a silky feeling and a matte finish. It gives a fresh sensation on the skin.*

	Trade Name	INCI Name	Function	%
A.	<b>KF-6105</b> ( <i>Shin Etsu</i> )	Lauryl Polyglyceryl-3 Polydimethylsiloxyethyl Dimethicone	Emulsifier	6,00
	<b>KSG-16</b> ( <i>Shin Etsu</i> )	Dimethicone, Dimethicone/Vinyl Dimethicone Crosspolymer	Texturizing Agent, Thickener	8,00
	<b>KF-96L-2cS</b> ( <i>Shin Etsu</i> )	Dimethicone	Emollient	20,00
	Microcare PHC ( <i>Thor</i> )	Phenoxyethanol, Chlorphenesin, Glycerin	Preservative	0,70
B.	<b>FDP-C-White3</b> ( <i>Nikko</i> )	Talc, CI 77891, Hydrogen Dimethicone, Aluminum Hydroxide	Pigment	8,00
	<b>FDP-C-Da-Yellow</b> ( <i>Nikko</i> )	CI 77492, Talc, Hydrogen Dimethicone	Pigment	1,85
	<b>FDP-C-Da-Red</b> ( <i>Nikko</i> )	CI 77491, Talc, Hydrogen Dimethicone	Pigment	0,40
	<b>FDP-C-Da-Black</b> ( <i>Nikko</i> )	CI 77499, Talc, Hydrogen Dimethicone	Pigment	0,35
C.	<b>Elisphere A812</b> ( <i>Prodotti Gianni</i> )	Silica	Texturizing Agent, Soft Focus, Thickener	4,00
	<b>Composite Powder AL-40</b> ( <i>Toshiki</i> )	Dimethicone/Vinyl Dimethicone Crosspolymer, Alumina	Texturizing Agent, Soft Focus	3,00
D.	Deionized Water	Aqua		44,70
	<b>1,3-Butylene Glycol</b> ( <i>SPE</i> )	Butylene Glycol	Humectant	3,00

### Chemical/physical characteristics

Appearance:	brown cream
pH:	n.a.
Viscosity (Brookfield RVT, 20 rpm, 20°C):	1.200-2.000 mPa·s
Stability:	

### Manufacturing process

Mix components of phase A. Disperse first phase B and then C into phase A. Add phase D into A+B+C and mix until the system is homogeneous.

### Remarks

Shake before use



% of natural derived ingredients in the formulation (water included)





www.cosmesi.it

# TECHNICAL MARKETING PROFILE

PROV0033

## SILKY FUSION FOUNDATION DROPS

Ultra fluid foundation that gives excellent coverage and feels like silk upon application. Thanks to the **high water content** and to **KF-96L-2cS**, a very low-viscosity and volatile dimethicone, it **dries down quickly** and **completely**, leaving a beautiful even complexion. **Composite Powder AL-40** and **Elisphere A812** give a **matte finish**, making it perfect for acne-prone skin.

### Key Ingredients

**Elisphere A812:** it provides a great **soft focus effect**, **erasing time** all over the face. It is a **texturizer**, **absorbs sebum**, **thickens lipophilic systems** and provides **soft focus effect**.

**Composite Powder AL-40:** silicone elastomer coated with alumina, with average particle size 10-12 microns. It **improves texture**, **reduces greasiness** and **provides soft focus effect**.

### Technical Plus

**KF-6105:** PEG-free alkylated silicone **emulsifier** with a polyglyceryl moiety, suitable for W/S and W/O emulsions.

### Unique plus of the formula

An ultra fluid foundation that **dries very quickly** and gives a unique **fresh feeling**.

### Consumer benefits

- **natural** healthy look
- **easy to spread**

### Free of:

- peg
- fragrances
- parabens
- petrolatum
- sulfates
- microplastic powders



**PRODOTTI GIANNI S.r.l.**  
Via Quintiliano, 30 - 20138 MILANO (ITALY)  
Tel. +39 02 5097 200 - Fax +39 02 5097 266  
[www.prodottigianni.com](http://www.prodottigianni.com)



**EM2-1-03**

## ILLUMINATING SILICONE-FREE FOUNDATION

A cold process, silicon-free, fluid W/O foundation that gives a natural glow effect thanks to high refractive index emollients, Arcopearls Sparkle and Silver Vine Extract.

	Trade Name	INCI Name	Function	%
A.	<b>Nikkomulese WO-NS</b> (Nikko)	Polyglyceryl-6 Polyricinoleate, Polyglyceryl-2 Isostearate, Distearidimonium Hectorite	Emulsifier	5,00
	<b>Decaglyn 5-HS</b> (Nikko)	Polyglyceryl-10 Pentahydroxystearate	Emulsifier	1,50
	<b>Dermol Joba</b> (Alzo)	Cetearyl Ethylhexanoate	Emollient	16,50
	<b>Wickenol 131</b> (Alzo)	Isopropyl Isostearate	Emollient	10,00
	<b>Trifat S-308</b> (Nikko)	Triethylhexanoin	Emollient	5,00
B.	<b>WCP-2039-White3</b> (Nikko)	CI 77891, Talc, Magnesium Stearate, Aluminum Hydroxide, Mica, Stearic Acid	Pigment	6,50
	<b>WCP-2039-Da-Yellow3</b> (Nikko)	Talc, CI 77492, Magnesium Stearate, CI 77891, Mica, Aluminum Hydroxide, Stearic Acid	Pigment	1,50
	<b>WCP-2039-Da-Red3</b> (Nikko)	Talc, CI 77491, Magnesium Stearate, CI 77891, Mica, Aluminum Hydroxide, Stearic Acid	Pigment	0,60
	<b>WCP-2039-Da-Black3</b> (Nikko)	Talc, CI 77499, Magnesium Stearate, CI 77891, Mica, Aluminum Hydroxide, Stearic Acid	Pigment	0,80
	<b>Arcopearl Sparkle 300</b> (Presperse)	Synthetic Fluorophlogopite, CI 77891, Tin Oxide	Pearl	1,00
	<b>Arcopearl Sparkle 210</b> (Presperse)	Synthetic Fluorophlogopite, CI 77891, Tin Oxide	Pearl	2,00
	<b>Arcopearl Sparkle 400</b> (Presperse)	Synthetic Fluorophlogopite, CI 77891, Tin Oxide	Pearl	0,50
C.	Deionized Water	Aqua		38,50
	<b>1,3-Butylene Glycol</b> (SPE)	Butylene Glycol	Humectant	5,00
	Gomma Xanthan (Res Pharma)	Xanthan Gum	Rheology Modifier	0,20
	<b>Silver Vine Extract BG30</b> (Maruzen)	Aqua, Butylene Glycol, Actinidia Polygama Fruit Extract	Anti-age, Moisturizing	1,00
D.	Microcare PHC (Thor)	Phenoxyethanol, Chlorphenesin, Glycerin	Preservative	0,90
E.	<b>Anybes Nylon 12</b> (Presperse)	Nylon-12	Texturizing Agent	3,50

### Chemical/physical characteristics

Appearance:	brown fluid emulsion
pH:	n.a.
Viscosity (Brookfield RVT, 20 rpm, 20°C):	5.000-7.000 mPa·s
Stability:	3 months at 40°C

### Manufacturing process

Weigh components of phase A and stir until the phase is homogeneous. Disperse powders (phase B) into phase A. Disperse Xanthan gum into water and then add humectant and active ingredient. Very slowly add phase C into phase A+ B under homogenization. When the emulsion is formed add preservative (phase D) and texturized agent (phase E).



% of natural derived ingredients in the formulation (water included)



www.cosmesi.it

# TECHNICAL MARKETING PROFILE

EM2-1-03

## ILLUMINATING SILICONE-FREE FOUNDATION

This **silicon-free W/O foundation** has a **fluid and non-tacky texture** thanks to **nikkomulse WO-NS**. The high refractive index emollients and the **Arcopearl Sparkle** reveal **natural skin's luminosity**, while **Silver Vine Extract** improves skin **translucency** and prevents protein carbonylation in the SC.

### Key Ingredients

**Nikkomulse WO-NS: PEG-free emulsifier** for **silicone-free W/O emulsions** with light and elegant textures. Allows to combine **penetrating** and **water-proof properties** of W/O systems without tackiness.

### Technical Plus

**Arcopearl Sparkle Series: synthetic mica** based pearlescent pigment with excellent brightness, **superior in interference and transparent colors**.

**Anybes Nylon 12:** these uniform beads have an **ultra-soft feel** with **excellent skin adhesion** and improve spreading, providing an **easy, glide-on application**.

### Active Plus

**Silver Vine Extract BG30: extract from the Japanese kiwi** that thanks to its mechanism of action makes **skin smoother** and **youthful**.

### Unique plus of the formula

**Luminous sheer coverage** for fresh and **radiant** skin.

### Consumer benefits

- **oil free** foundation
- natural **luminous** finish

### Free of:

- PEG
- Silicon
- Parabens
- Sulfates
- Phtalates



PRODOTTI GIANNI S.r.l.

Via Quintiliano, 30 - 20138 MILANO (ITALY)  
Tel. +39 02 5097 200 - Fax +39 02 5097 266

www.prodottigianni.com



Via M. F. Quintiliano, 30  
20138 Milano – Italy  
Tel: +39 02 5097 1  
Fax: +39 02 5097 266

**[www.prodottigianni.it](http://www.prodottigianni.it)**  
**[www.cosmesi.it](http://www.cosmesi.it)**  
**[cosmetico@prodottigianni.com](mailto:cosmetico@prodottigianni.com)**