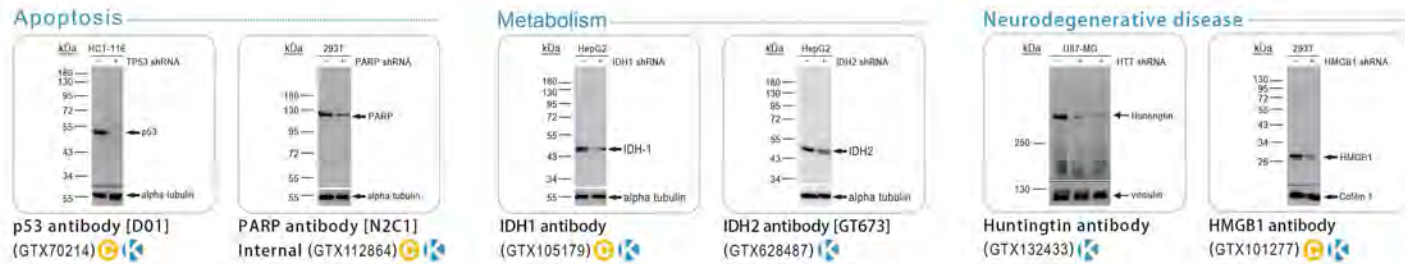


GeneTex is conducting knockdown-based validation as a fundamental component of its antibody quality assurance process. To date, we have evaluated over four hundred of our most popular products covering multiple research topics, such as apoptosis, metabolism, epithelial-mesenchymal transition, and neurodegenerative diseases. We will continue to expand these efforts in the future. Antibodies that have passed the knockout/knockdown test will be labeled with the **Knockout/Knockdown Validated** icon.



Distribuito in Italia da Prodotti Gianni s.r.l.

Via Quintiliano, 30 - 20138 Milano  
 Num. Verde: 800 832027 - Fax: 02 5097 276  
[ricerca@prodottigianni.com](mailto:ricerca@prodottigianni.com)



## Representative Antibody List

Product Name	Clonality	Reactivity	Application	Cat. No.
ADAR1 antibody [N3C1], Internal	Rb pAb	Human, Mouse, Rat	ICC/IF, IHC-P, IP, WB	GTX101602
APE1 antibody	Rb pAb	Human, Mouse	ICC/IF, IHC-P, IP, WB	GTX110558
ARD1A antibody	Rb pAb	Human	ICC/IF, WB	GTX125971
Calnexin antibody [GT1563]	Ms mAb	Human	WB	GTX629976
Calnexin antibody [N3C2], Internal	Rb pAb	Human	ICC/IF, IHC-P, WB	GTX101676
Cofilin 1 antibody [GT567]	Ms mAb	Human, Mouse	IHC-P, WB	GTX628804
COX4 antibody [GT854]	Ms mAb	Human, Mouse, Rat	IHC-P, WB	GTX628901
Cytokeratin 18 antibody [N3C3]	Rb pAb	Human	WB	GTX112978
DCK antibody	Rb pAb	Human, Mouse, Rat	ICC/IF, IHC-P, IP, WB	GTX107636
DCK antibody	Rb pAb	Human, Mouse, Rat	ICC/IF, IHC-P, WB	GTX102800
DNA ligase III antibody	Rb pAb	Human	ICC/IF, WB	GTX103172
EED antibody	Rb pAb	Human, Mouse, Rat	IHC-P, WB	GTX112268
EGFR antibody [N1], N-term	Rb pAb	Human	ICC/IF, IHC-P, WB	GTX100725
Filamin B antibody [GT387]	Ms mAb	Human	ICC/IF, IHC-P, WB	GTX632425
G9a antibody	Rb pAb	Human, Mouse	IHC-P, WB	GTX128164
GATA4 antibody	Rb pAb	Human, Mouse, Rat	ICC/IF, IHC-P, IP, WB	GTX113194
GCLM antibody [N1N3]	Rb pAb	Human	WB	GTX111858
Glutaminase C antibody	Rb pAb	Human	ICC/IF, IP, WB	GTX131263
GPX2 antibody [C1C3]	Rb pAb	Human, Mouse	ICC/IF, IHC-P, IP, WB	GTX100292
IDH2 antibody [GT673]	Ms mAb	Human	ICC/IF, IHC-P, IP, WB	GTX628487
MCTS1 antibody [N1C3]	Rb pAb	Human	ICC/IF, WB	GTX117793
ME1 antibody	Rb pAb	Human, Mouse, Rat	ICC/IF, IHC-P, WB	GTX104122
NDP52 antibody	Rb pAb	Human, Mouse	ICC/IF, IHC-P, WB	GTX115378
NuMA antibody [GT3611]	Ms mAb	Human, Mouse	WB	GTX629397
Ribosome binding protein 1 antibody [C3], C-term	Rb pAb	Human	ICC/IF, WB	GTX101844
ROCK2 antibody	Rb pAb	Human, Mouse	ICC/IF, IHC-P, IP, WB	GTX102619
SA1 antibody	Rb pAb	Human	ICC/IF, IHC-P, WB	GTX129912
UQCRC1 antibody [N1N3]	Rb pAb	Human	ICC/IF, IHC-P, WB	GTX101862
VPS34 antibody	Rb pAb	Human, Mouse, Rat	ICC/IF, IHC-P, WB	GTX129528
YAP1 antibody	Rb pAb	Human, Mouse	ICC/IF, IHC-P, WB	GTX129151
ZO-1 antibody [N2C1], Internal	Rb pAb	Human, Mouse, Rat	ICC/IF, IHC-P, IP, WB, ChIP assay	GTX108627

## Customize Your Antibody Panel

**Five Antibodies (25µl) €459**

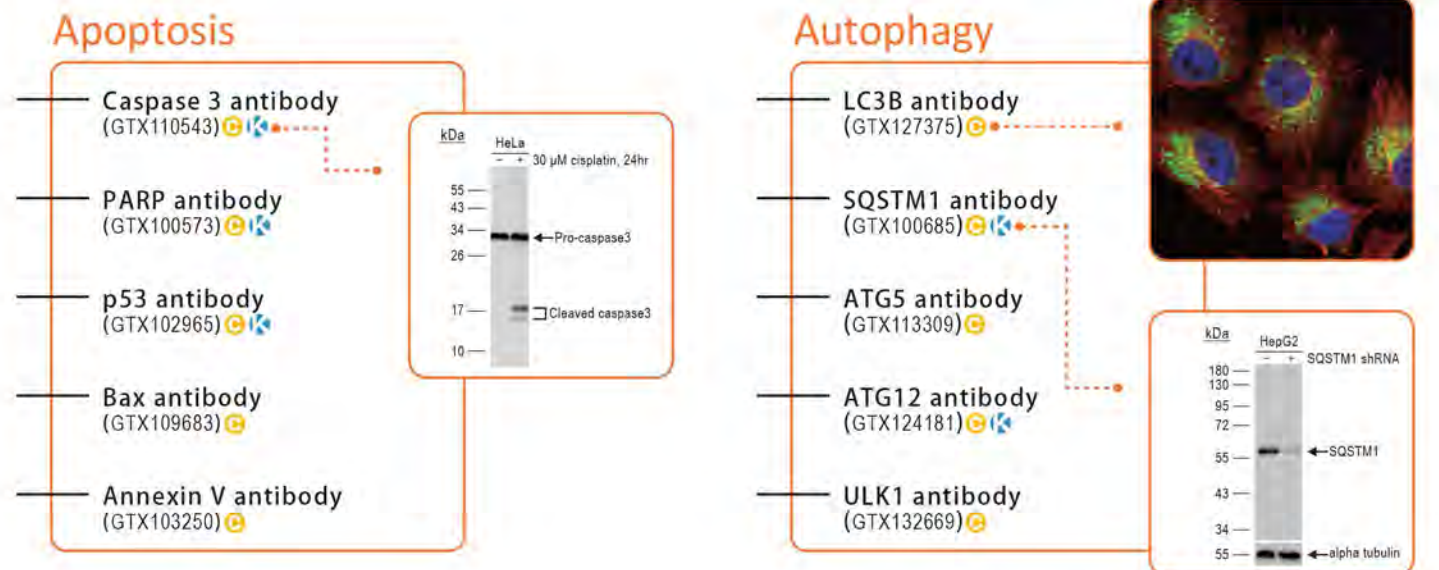
Or Three Antibodies (25µl) for €315

### The Need

Looking for an economical way to study different signaling pathways involved in your research?  
 Or need a flexible combination of antibodies of your own choice to better understand a specific mechanism?  
 Or simply want to perform a pilot experiment to evaluate the feasibility of a new project?

### The Solution

Our customized antibody panel program allows you to combine antibodies of your own choice in a set, thus providing a cost-effective way for researchers to investigate multiple targets. Whether you are studying cancer signaling, characterizing neural patterns, or simply detecting organelle markers, you can develop your own antibody panel to best suit your research goals.

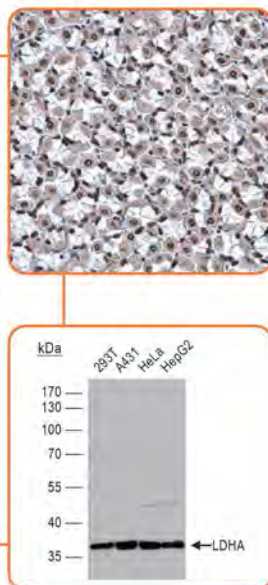


# Customize Your Antibody Panel

Citation Support  
KO/KD Validated

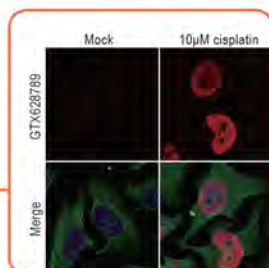
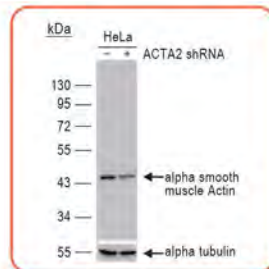
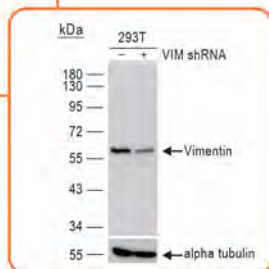
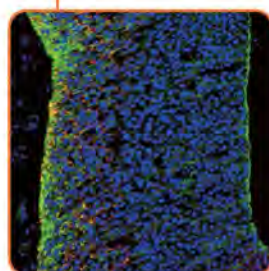
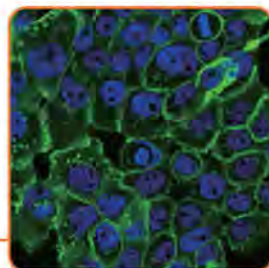
## Necrosis

- Cyclophilin A antibody (GTX104698)
- HMGB1 antibody (GTX112959)
- Cyclophilin 40 antibody (GTX104038)
- LDHA antibody (GTX101416)
- RIP3 antibody (GTX107574)



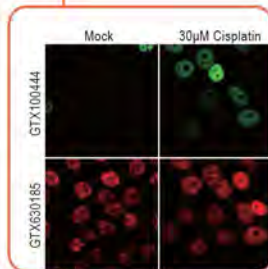
## EMT

- E-cadherin antibody (GTX100443)
- N-cadherin antibody (GTX127345)
- Vimentin antibody (GTX112661)
- Twist1/2 antibody (GTX127310)
- $\alpha$  SMA antibody (GTX629702)



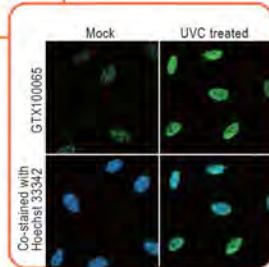
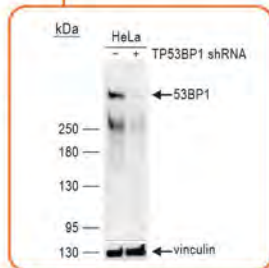
## Cell Cycle

- CDK2 antibody (GTX132838)
- p21 Cip1 antibody (GTX100444)
- Cyclin A2 antibody (GTX103042)
- Cyclin D1 antibody (GTX108624)
- CDC2 antibody (GTX108120)



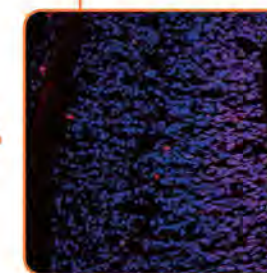
## DNA Damage

- H2A.XS139ph antibody (GTX628789)
- 53BP1 antibody (GTX102595)
- Chk1 (pSer345) antibody (GTX100065)
- Chk2 (pThr68) antibody (GTX128073)
- Histone H3K9me3 antibody (GTX121677)



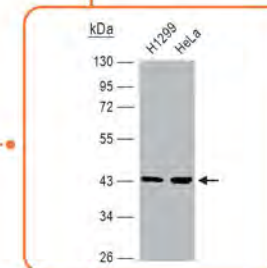
## iPSC Markers

- SOX2 antibody (GTX627404)
- Nanog antibody (GTX627421)
- Lin28A antibody (GTX628139)
- KLF4 antibody (GTX101508)
- c-Myc antibody (GTX628459)



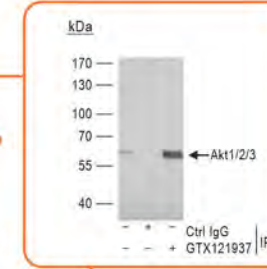
## MAPK Pathway

- p38 MAPK antibody (GTX110720)
- MEK1/2 antibody (GTX121942)
- MEK3 antibody (GTX107529)
- ERK2 antibody (GTX113094)
- JNK1 antibody (GTX101165)



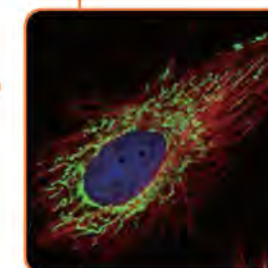
## AKT Pathway

- AKT antibody (GTX121937)
- AKT (pSer473) antibody (GTX128414)
- TSC1 antibody (GTX130062)
- Ikk beta antibody (GTX105690)
- PKD1 antibody (GTX107405)



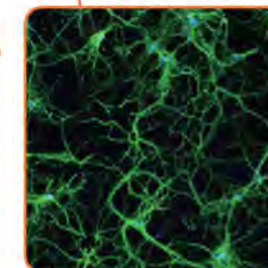
## Organelle Markers

- Lamin A/C antibody (GTX101127)
- COX4 antibody (GTX101499)
- EEA1 antibody (GTX109638)
- $\gamma$  Tubulin antibody (GTX113286)
- pan Cadherin antibody (GTX132646)



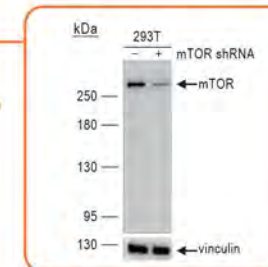
## Mature Neuron Markers

- TUJ1 antibody (GTX631836)
- NeuN antibody (GTX132974)
- NF-H antibody (GTX110065)
- PSD95 antibody (GTX133091)
- $\alpha$  Internexin antibody (GTX130053)



## mTOR Pathway

- mTOR antibody (GTX101557)
- mTOR (pSer2448) antibody (GTX132803)
- Raptor antibody (GTX131508)
- mLST8 / GBL antibody (GTX132580)
- RICTOR antibody (GTX104617)



### Terms & Conditions:

- Purchase three (3) antibodies (25  $\mu$ l) for €315 with **Promocode GTX325**.
- Purchase five (5) antibodies (25  $\mu$ l) for €459 with **Promocode GTX525**.
- Promotion valid in specific areas. Please contact your distributors.
- GeneTex reserves the right of interpretation.

Promotion time: Throughout the year 2017