

eFluor® Nanocrystal Conjugation Kits

Conjugate your antibody in the morning ...
use it in the afternoon!

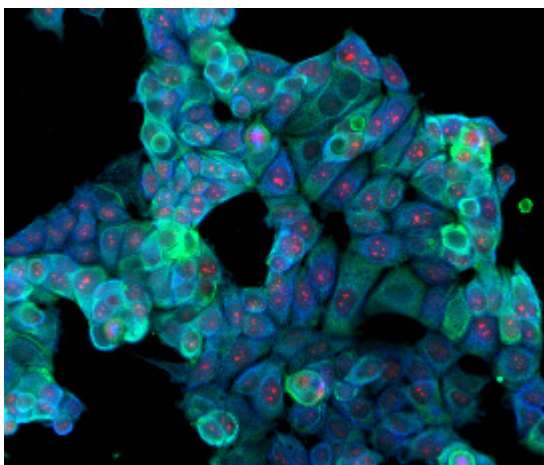
These unique kits allow you to combine the power of nanocrystals with your own antibody or protein of interest, enabling their use in multiple fluorescence applications such as flow cytometry and immunofluorescence microscopy.

Advantages of eFluor Nanocrystal Conjugation Kits:

- **Easy to perform** - optimized kits deliver a complete, simple protocol for protein conjugation.
- **Fast** - under 30 minutes hands-on time. Compare to other conjugation kits requiring > 3 hours.
- **Consistent results** - all key reagents are included, giving you dependable results every time.
- **Flexible** - offered in two chemistries, Amine-Reactive and Sulfhydryl Reactive, for optimal labeling of your protein or antibody.

eFluor® Nanocrystal Conjugation Kits			
Product	Fluorophore	Application Notes	Size
eFluor® Nanocrystal Conjugation Kit - Amine Reactive	eFluor® 605NC eFluor® 650NC	Conjugation to biomolecules containing primary amines (-NH ₂). Use labeled products for Immunocytochemistry, Immunohistochemistry or Flow Cytometry.	Suitable for performing two protein / antibody conjugations
eFluor® Nanocrystal Conjugation Kit - Sulfhydryl Reactive	eFluor® 605NC eFluor® 650NC	Conjugation to biomolecules containing thiol, cysteine or disulfide groups. Use labeled products for Immunocytochemistry, Immunohistochemistry, Flow Cytometry.	Suitable for performing two protein / antibody conjugations

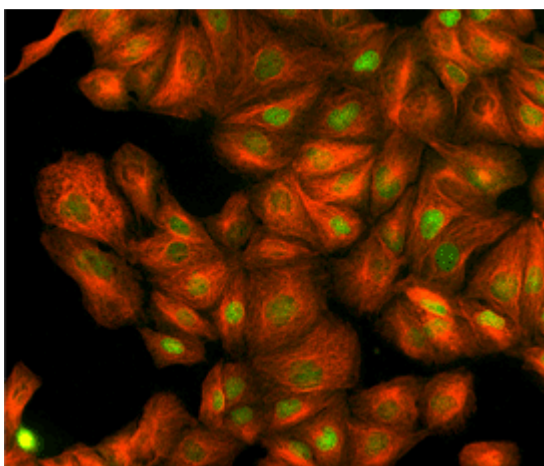
eFluor® Nanocrystal Conjugation of Monoclonal Antibodies



eFluor® Nanocrystal Conjugation of Monoclonal Antibodies

MCF-7 cells were stained using Anti-Cytokeratin (AE1) eFluor® 605NC (pseudo-colored blue) and Anti-Tubulin (DM1A) eFluor® 650NC (green) reagents conjugated using using eFluor® Nanocrystal Conjugation Kit - Sulfhydryl Reactive. Anti-Ki67 (20Raj1) Alexa Fluor® 647 is shown in red.

eFluor® Nanocrystal Conjugation of Polyclonal Antibodies



eFluor® Nanocrystal Conjugation of Polyclonal Antibodies

MDCK cells stained with polyclonal Rabbit Anti-Histone H3 eFluor® 605NC (green) conjugated using eFluor® Nanocrystal Conjugation Kit - Amine Reactive. Anti-Tubulin (DM1A) eFluor® 650NC is shown in red.

Choose your Kit

Two high-performance options for nanocrystal conjugation allow you to choose the kit best suited for your antibody or protein target. These kits are designed for conjugation to either free amine (-NH₂) or to sulfhydryl (thiol) groups, either of which may be present in your protein of interest. For additional details about choosing the kit which is right for you, view our technical tips and protocols or contact our experienced technical support scientists.



Amine Reactive Conjugation Kits

Conjugate proteins containing primary amines (-NH₂).

[Amine Reactive Conjugation Kits](#)



Sulfhydryl Reactive Conjugation Kits

Conjugate proteins containing sulfhydryl (thiol), cysteine or disulfide groups.

[Sulfhydryl Reactive Conjugation Kits](#)